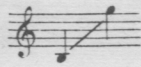


VOCALISE-ÉTUDE

pour VOIX ÉLEVÉES

PREMIER VOLUME
N° 1



GABRIEL FAURÉ

Adagio molto tranquillo.

mp Legato sempre.

Adagio molto tranquillo. (60 = ♩)

5

10 →

10

System 10: Treble and bass staves. Treble staff has a melodic line with a *mf* dynamic. Bass staff has a rhythmic accompaniment with a *mf* dynamic. A crescendo hairpin is shown in the bass staff.

System 11: Treble and bass staves. Treble staff features sixteenth-note runs with a *mf* dynamic. Bass staff has a rhythmic accompaniment. A crescendo hairpin is shown in the bass staff.

System 12: Treble and bass staves. Treble staff has a melodic line with a *p* dynamic. Bass staff has a rhythmic accompaniment with a *p* dynamic. A crescendo hairpin is shown in the bass staff.

20

System 13: Treble and bass staves. Treble staff has a melodic line with a *mf* dynamic. Bass staff has a rhythmic accompaniment. A crescendo hairpin is shown in the bass staff.

Dim. Dim.

Dim.

Dim. *mf* *sf* *sf* *Espress.*

89

25

p *p* *Dim.*

77

89

Dim. *Dim.*